



RLM ENGINEERS

SPECIALIST IN

- ❖ EPOXY FLOORING
- ❖ EPOXY COATING
- ❖ ESD FLOORING
- ❖ POLYURETHANE FLOORING & COATINGS
- ❖ CEMENTICIOUS SELF LEVELING FLOORING
- ❖ CAR PARKING FLOORING
- ❖ DEMARCATION LINE MARKING
- ❖ EXPANSION JOINTS TREATMENTS
- ❖ CONCRETE POLISHING
- ❖ ROOF AREA WATERPROOFING
- ❖ WET AREAS WATERPROOFING – KITCHEN & BATHROOM
- ❖ BASEMENT WATERPROOFING
- ❖ CEMENTICIOUS & PU INJECTION WATERPROOFING

ABOUT US

RLM ENGINEERS provides one stop solutions for epoxy flooring and waterproofing works. we have different type of products and services to meet your requirements. at vanity technical ser-vices, we understand that one of the major challenges for designers, engineers and construc-tion companies alike is to protect buildings.

RLM ENGINEERS offer epoxy flooring and waterproofing services in Automobile industries ,Engineering industry, Electronic manufacturing industries, Pharmaceutical ,commercial, hotels, hospitals, new and old construction.

EPOXY FLORRING

Epoxy Floors with light to medium traffic |
Production areas | Clean rooms |
Pharmaceuticals | Warehouse

- Glossy finish in wide range of colours
- Dust-proof, seamless flooring
- High chemical resistance
- Protects against moisture penetration
- Easy to clean & maintain, Durable

ESD FLOORING

Electronics manufacturing industry |
Clean rooms | Hospital operation theatres |
Solvent han-dling/Processing areas |
Hazardous dust and chemical environments

- Electrostatic dissipative
- Electrical resistance
value 1×10^5 to 1×10^9 ohms
- Water and chemical resistance
- Antimicrobial
- Glossy finish, Seamless

POLYURETHANE FLOORING

Polyurethane has a hard wearing |
Abrasion Resistant and Smooth
Matt colored finish.

- Smooth surface with matt finish
- High abrasion resistance
- Good thermal shock resistance
(-25 °C to 110 °C)
- Dust-proof, seamless flooring

CONCRETE POLISHING

Polished concrete doesn't get scratches or
breakage in normal situation. This is why,
polished concrete is used for spaces with
heavy traffic and equipment

- Abrasion- and stain-resistant
- Dust-proof
- Get Glossier over time with regular cleaning
- No peeling or discoloration.

SOME OF OUR SITE PHOTOS



OUR SERVICES



BASEMENT WATERPROOFING



WATERTANK WATERPROOFING



TERRACE WATERPROOFING



EPOXY FLOORPAINT



CONCRETE SELF LEVELING



EPOXY 3D FLOORING



CAR PARKING COATING



CAR PARKING COATING



PHARMA AND FOOD INDUSTRIES



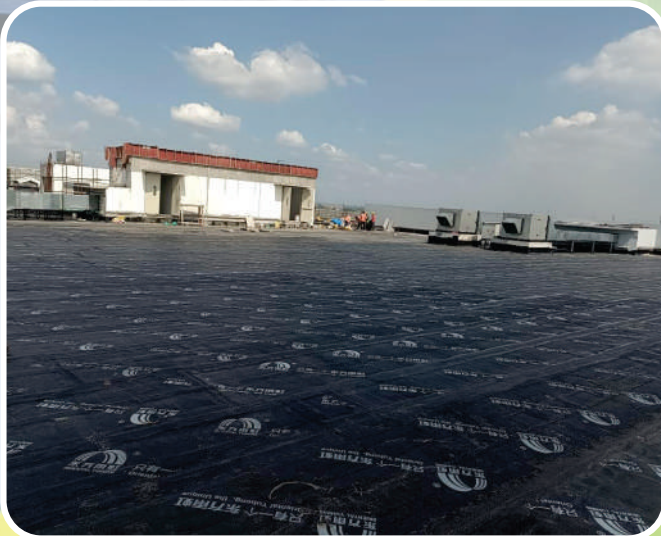
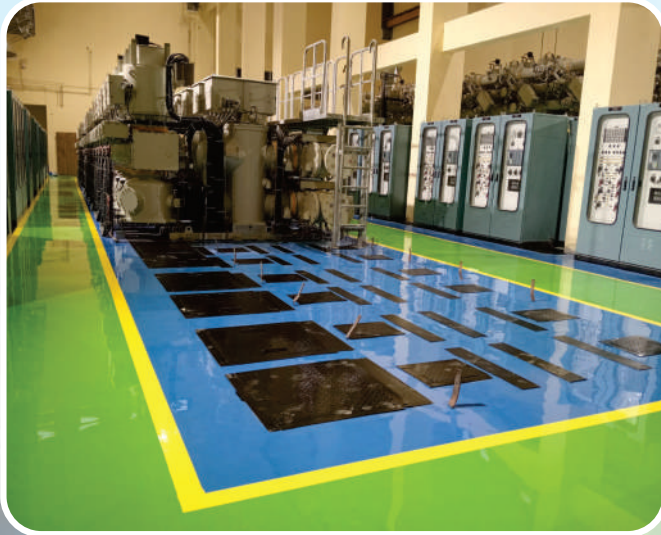
SHOPPING MALLS



TEXTILE PROCESSING INDUSTRIES



ELECTRONIC AND IT INDUSTRIES



SOME OF OUR CLIENTS



RLM ENGINEERS

GSTNO: 33CSQPM70O8GIZL | PAN NO, CSQPM70O8G

Head Office : No. 2, 126/2, Avanthankottai, Aranthangi, Pudukottai - 614626

Branch : No. 39, Ground Floor, Ethiraj Nagar, Mangadu, Chennai - 600 122.

Email: rlmengineers20@gmail.com | ☎ +91 6380797380